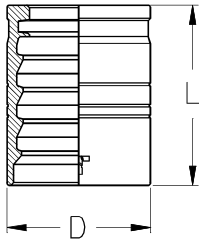


Perskoppelingen X serie

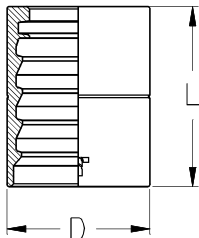
3

SKIVE



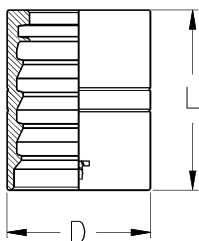
GSS Artikel nr	Slangmaat			Afmetingen (mm)		Toepassing					
	DN	SIZE	Inch	D	L						
BXLP03	5	03	3/16"	17	26	1SN	R1AT	2SN	R2AT		
BXLP04	6	04	1/4"	19	29	1SN	R1AT	2SN	R2AT	2SC	
BXLP05	8	05	5/16"	21	29	1SN	R1AT	2SN	R2AT	2SC	
BXLP06	10	06	3/8"	23	31,5	1SN	R1AT	2SN	R2AT	2SC	
BXLP08	12	08	1/2"	27	34	1SN	R1AT	2SN	R2AT	2SC	
BXLP10	16	10	5/8"	32	37	1SN	R1AT	2SN	R2AT	2SC	
BXLP12	19	12	3/4"	36	43	1SN	R1AT	2SN	R2AT	2SC	
BXLP16	25	16	1"	44	49	1SN	R1AT	2SN	R2AT	2SC	

SKIVE



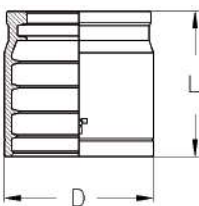
GSS Artikel nr	Slangmaat			Afmetingen (mm)		Toepassing					
	DN	SIZE	Inch	D	L						
BXL20	31	20	1 1/4"	50	55	1SN	R1AT				
BXL24	38	24	1 1/2"	57	60	1SN	R1AT				
BXL32	51	32	2"	70	75	1SN	R1AT				

SKIVE



GSS Artikel nr	Slangmaat			Afmetingen (mm)		Toepassing					
	DN	SIZE	Inch	D	L						
BXP20	31	20	1 1/4"	54	55			2SN	R2AT		
BXP24	38	24	1 1/2"	62	60			2SN	R2AT		
BXP32	51	32	2"	75	75			2SN	R2AT		

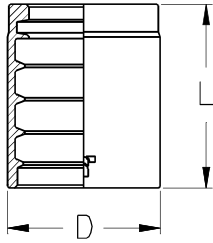
NO SKIVE



GSS Artikel nr	Slangmaat			Afmetingen (mm)		Toepassing					
	DN	SIZE	Inch	D	L						
BNK104	6,3	06	1/4"	20,5	26	1SN	1SC	R17	2SC		
BNK105	8	08	5/16"	22,5	26	1SN	1SC	R17	2SC		
BNK106	10	06	3/8"	24,5	26,5	1SN	1SC	R17	2SC		
BNK108	12	08	1/2"	28,5	28,5	1SN	1SC	R17	2SC		
BNK110	16	10	5/8"	32	31	1SN	1SC	R17	2SC		
BNK112	19	12	3/4"	36	35	1SN	1SC	R17	2SC		
BNK116	25	16	1"	45	44	1SN	1SC	R17	2SC		

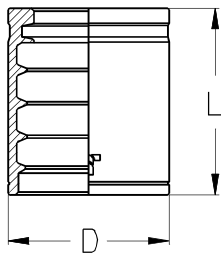
Perskoppelingen X serie

NO SKIVE



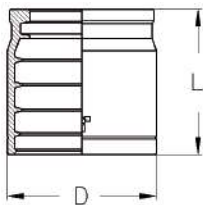
GSS Artikel nr	Slangmaat			Afmetingen (mm)		Toepassing				
	DN	SIZE	Inch	D	L					
BXC04	6	04	1/4"	19	23	1SC				
BXC05	8	05	5/16"	20	27,5	1SC				
BXC06	10	06	3/8"	23	30	1SC				
BXC08	12	08	1/2"	26,5	32	1SC				
BXC10	16	10	5/8"	29	35	1SC				
BXC12	19	12	3/4"	33	34	1SC				
BXC16	25	16	1"	42	45	1SC				

NO SKIVE



GSS Artikel nr	Slangmaat			Afmetingen (mm)		Toepassing				
	DN	SIZE	Inch	D	L					
BXT103	5	03	3/16"	19	24	1SN	R1AT			
BXT104	6	04	1/4"	20	27	1SN	R1AT	2SC		
BXT105	8	05	5/16"	22	27,5	1SN	R1AT	2SC		
BXT106	10	06	3/8"	24,5	30	1SN	R1AT	2SC		
BXT108	12	08	1/2"	28	32,5	1SN	R1AT	2SC		
BXT110	16	10	5/8"	32	35	1SN	R1AT	2SC		
BXT112	19	12	3/4"	36	40	1SN	R1AT	2SC		
BXT116	25	16	1"	45	50	1SN	R1AT	2SC		
BXT120	31	20	1 1/4"	54	50	1SN	R1AT			
BXT124	38	24	1 1/2"	62	55	1SN	R1AT			
BXT132	51	32	2"	76	60	1SN	R1AT			

NO SKIVE



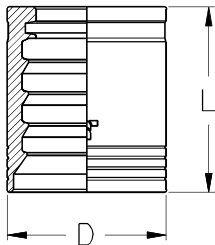
GSS Artikel nr	Slangmaat			Afmetingen (mm)		Toepassing				
	DN	SIZE	Inch	D	L					
BXT203	5	03	3/16"	20	24	2SN	R2AT	2SC-P Superstream		
BXT204	6	04	1/4"	22	26	2SN	R2AT	2SC-P Superstream		
BXT205	8	05	5/16"	24	27,5	2SN	R2AT	2SC-P Superstream		
BXT206	10	06	3/8"	26	30	2SN	R2AT	2SC-P Superstream		
BXT208	12	08	1/2"	30	32,5	2SN	R2AT	2SC-P Superstream		
BXT210	16	10	5/8"	34	35	2SN	R2AT	2SC-P Superstream		
BXT212	19	12	3/4"	38	40	2SN	R2AT	2SC-P Superstream		
BXT216	25	16	1"	48	50	2SN	R2AT			
BXT220	31	20	1 1/4"	60	57	2SN	R2AT			
BXT224	38	24	1 1/2"	67	62	2SN	R2AT			
BXT232	51	32	2"	80	66	2SN	R2AT			

3

Perskoppelingen X serie

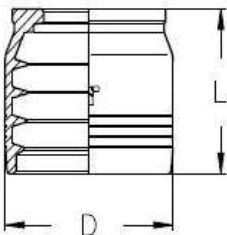
3

SKIVE



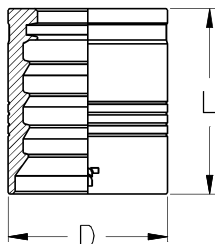
GSS Artikel nr	Slangmaat			Afmetingen (mm)		Toepassing						
	DN	SIZE	Inch	D	L							
	BXS04	6	04	1/4"	22	30	4SP	R9R**				
BXS06	10	06	3/8"	26	32,5	4SP	R9R**		R12	2ST	R2A	
BXS08	12	08	1/2"	30	35	4SP	R9R**		R12	2ST	R2A	
BXS10	16	10	5/8"	34	38,5	4SP	R9R**		R12	2ST	R2A	
BXS12	19	12	3/4"	38	43,5	4SP	R9R**	4SH**	R12	2ST	R2A	
BXS16	25	16	1"	46	54	4SP	R9R**	4SH**	R12	2ST	R2A	
BXS20	31	20	1 1/4"	56	61	4SP			R12	2ST	R2A	
BXS24	38	24	1 1/2"	65	68	4SP			R12	2ST	R2A	
BXS32	51	32	2"	78	74	4SP						

NO SKIVE



GSS Artikel nr	Slangmaat			Afmetingen (mm)		Toepassing						
	DN	SIZE	Inch	D	L							
	BXT406	10	06	3/8"	30	30	4SP	R12				
BXT408	12	08	1/2"	34	33	4SP	R12					
BXT410	16	10	5/8"	39	37	4SP	R12					
BXT412A	19	12	3/4"	43	41	4SP	R12					
BXT416A	25	16	1"	50	52	4SP	R12					

SKIVE

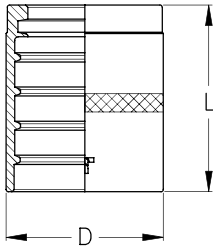


GSS Artikel nr	Slangmaat			Afmetingen (mm)		Toepassing						
	DN	SIZE	Inch	D	L							
	BXSH20	31	20	1 1/4"	54	61		R9R**	4SH**			
BXSH24	38	24	1 1/2"	62	69		R9R**	4SH**				
BXSH32	51	32	2"	76	74		R9R**	4SH**	R12	2ST	R2A	

** Bij gebruik van deze pershulzen icm X type perskoppelingen moet de maximale werkdruk van 4SP gehanteerd worden.

Perskoppelingen X serie

NON SKIVE



GSS Artikel nr	Slangmaat					Afmetingen (mm)		Toepassing			
	DN	SIZE	Inch	D	L						
BX703	5	03	3/16"	15,0	26,0			R7	R8		
BX704	6	04	1/4"	17,0	29,0			R7	R8		
BX705	8	05	5/16"	20,0	30,5			R6	R7	R8	
BX706	10	06	3/8"	22,0	32,0			R6	R7	R8	
BX708	12	08	1/2"	27,0	32,5			R6	R7	R8	
BX710	16	10	5/8"	31,0	37,0			R6	R7	R8	
BX712	20	12	3/4"	34,5	41,0			R6	R7	R8	
BX716	25	16	1"	40,0	50,0			R6	R7		

NON SKIVE



GSS Artikel nr	Slangmaat			Afmetingen (mm)		Toepassing					
	DN	SIZE	Inch	D	L						
BPPTFE-03	5	03	3/16"	13,0	27,0			EFH			
BPPTFE-04	6	04	1/4"	17,0	29,0			EFH	EFC		
BPPTFE-05	8	05	5/16"	19,0	30,0			EFH			
BPPTFE-06	10	06	3/8"	21,5	31,0			EFH	EFC		
BPPTFE-08	12	08	1/2"	26,0	34,0			EFH	EFC		
BPPTFE-10	16	10	5/8"	29,0	40,0			EFH	EFC		
BPPTFE-12	20	12	3/4"	32,0	42,0			EFH	EFC		
BPPTFE-16	25	16	1"	40,0	50,0			EFH	EFC		